

O·scan
equine



www.esaote.com

esaote

Introduction

Sedated, stationary MRI is the standard of excellence recognized worldwide as the correct way to scan anatomy without compromising image quality. The Oscan equine covers imaging of the equine foot, pastern, fetlock, high suspensory, carpus and tarsus regions of the equine limb.

The Oscan equine is the ideal cost effective MRI to clearly distinguish between bone edema, ligaments or tendons ensuring an accurate imaging, through excellent contrast resolution and image quality; essential for an optimal diagnosis.



- ✓ Open permanent magnet
- ✓ 0.31 Tesla field
- ✓ Max RF power: 1500 W
- ✓ Shimming: passive
- ✓ Gradient: ± 20 mT/m
- ✓ FOV: 14 cm
- ✓ Low Power
Consumption: only 1 kW in normal 220/110 V power outlet
- ✓ Complete set of dedicated DPA coils

High Performance MRI at a fraction of the cost

O-scan Equine offers unsurpassable performance, comparable to the image quality of 1.5T systems.

The system covers imaging of the equine foot, pastern, fetlock, high suspensory, carpus and tarsus regions of the equine limb. With the special 3D SHARC sequence for articular cartilage evaluation and the XBONE, to evaluate bone marrow edema and soft tissues structures, you can easily get the complete assessment of the pathology with a very short exam time.

Also the most complete Pre purchase examination (PPE) can be executed very effectively with the Oscan equine, to evaluate the Musculoskeletal System, where most abnormalities are identified such as conformational defects, previous injuries or surgical scars as well as current soundness.

Unique advantages for you

Esaote's product development efforts have been highly focused on optimizing the features, performance and image quality of its MRI systems. Technology sums up to faster overall system response thanks to a number of sophisticated MRI software techniques, designed around the new concept of parallel computing. eXP will substantially improve the MRI examination by reducing scan times and improving image quality.



Premium Image Quality

Higher image quality for easier and more reliable diagnosis leads to optimal marketing for your services.



Low power consumption

Differently from High field systems, the Oscan equine does not require electricity or cryogenic liquids resulting in very low maintenance costs.



Advanced Hardware

Optimized features, performance and image quality. Designed around the new concept of parallel computing, eXP will substantially improve the MRI examination by reducing scan times and improving image quality.



Plug & Play

As from the day of delivery the system is fully operational and ready to use after 1 week of installation, set-up and tuning and 1 week operating and application user training.



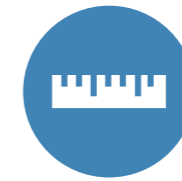
High Speed MRI

Shorter examination time means more comfort for the patient and higher efficiency. Pre-programmed protocols that simplify and speed up examination procedures.



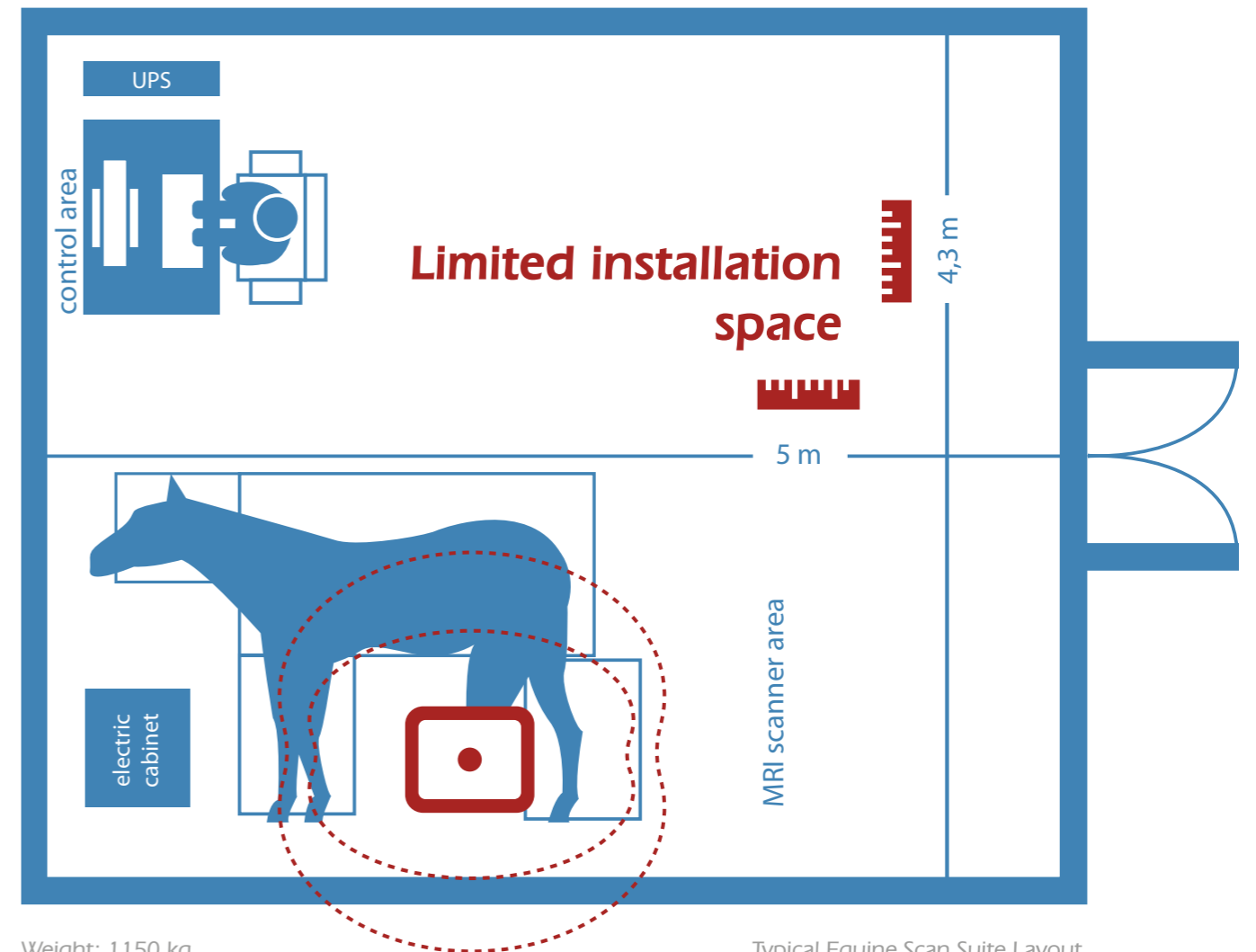
One Stop Shop

The fastest track to diagnosis and treatment, with the O-scan equine installed in your surgery room.



Limited installation space

The innovative design of the O-scan equine integrates a complete MRI system in one unique structure including RF shielding, with a low weight and extremely limited space needed for installation



Weight: 1150 kg
RF-Shielding: Integrated Internal Shielding

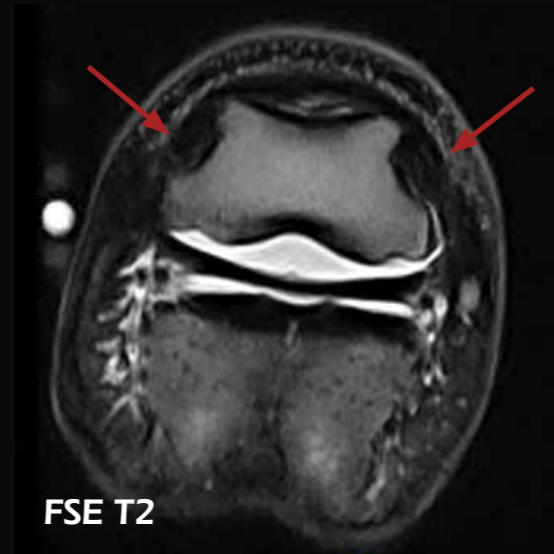
Typical Equine Scan Suite Layout

Case 1

Lesion of the collateral ligaments of the coffin joint



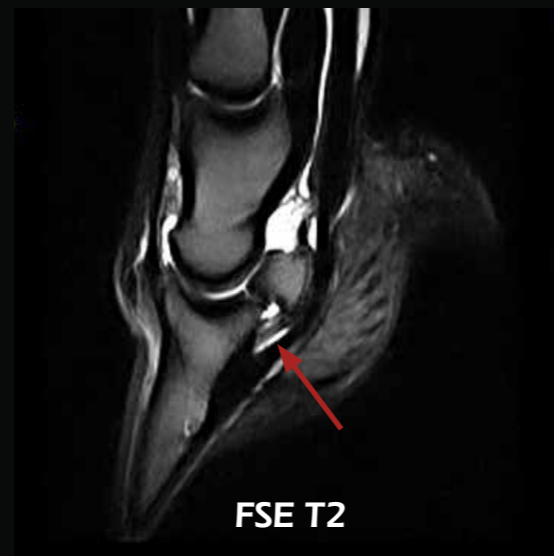
Significant T2 signal increase at the origins, proximal, mid and mid-distal levels of the medial and lateral collateral ligaments of the coffin joint.



In the axial plane the majority of the signal increases along the axial halves of the ligaments.

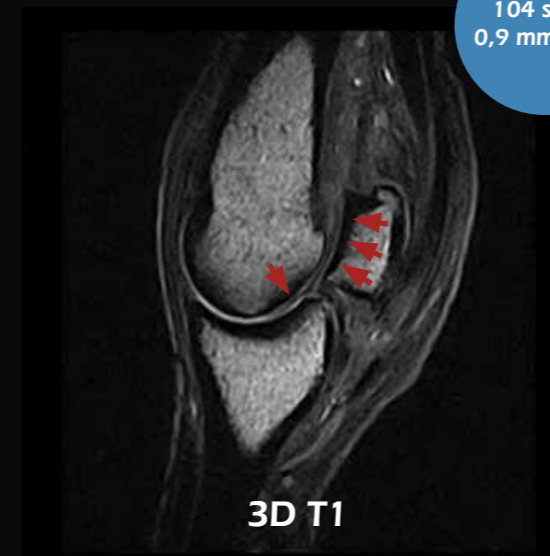


A tiny amount of STIR signal can be seen in palmar P2E where the distal impar ligament inserts. There is also a subtle increase in STIR signal seen in the navicular bone.



Case 2

Fetlock Artropathy

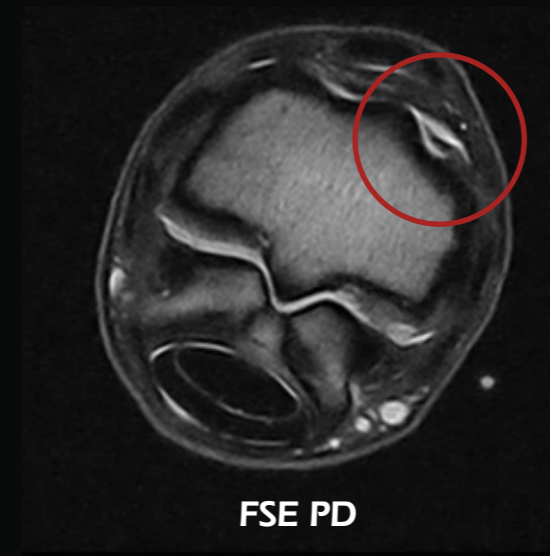


104 slices
0,9 mm thick

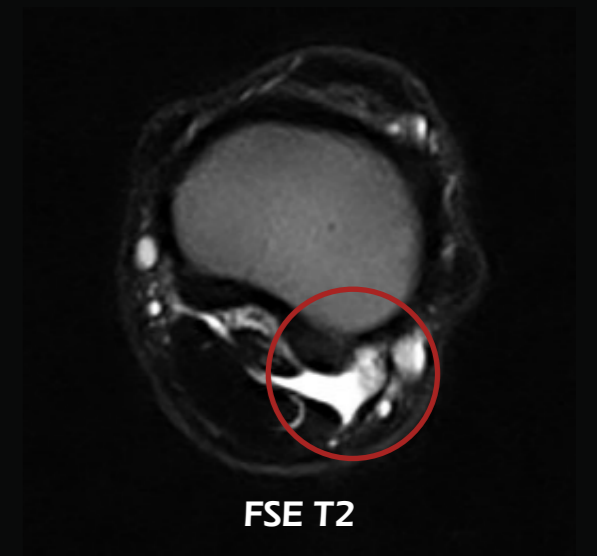
At the back of the metatarsosesamoidean joint there are areas with decreased cartilage signal on condyles and dorsal sesamoid bones.



Mild/moderate signal increase in the axial halves of the medial and lateral oblique distal sesamoidean ligaments.



The dorsal-lateral synovial pad is prominently seen as it is surrounded by fluid. This type of finding is often seen with a fetlock arthropathy.



Unusual accumulation of fluid in the palmar lateral pouch of the fetlock joint.



Join the global leader in veterinary imaging

Esaote is the pioneer in ultrasound and MRI in the veterinary field. Over 30 years of market leadership and preferred supplier for veterinary practices, clinics and research centers, but also for many zoos and wildlife institutions.

The perfect product in quality, functionality, price, service and education combined with the understanding of the veterinarians' needs, will guarantee the top position of Esaote in the veterinary imaging market.

Please challenge us with your imaging, ultrasound and/or MRI needs in your daily practice or specific projects. We would appreciate to be your imaging partner.

160000048MAK Ver. 01

Esaote S.p.A.

Via di Caciolle, 15 50127 Florence, Italy, Tel. +39 055 4229 1, Fax +39 055 4229 208, international.sales@esaote.com
Via A. Siffredi, 58 16153 Genoa, Italy, Tel. +39 010 6547 1, Fax +39 010 6547 275, info@esaote.com

FRANCE

Esaote Medical SAS
ZA du Bel Air
10, rue de Témara, 78105 Saint-Germain-en-Laye
Tel. +33 1 8204 8900, Fax +33 1 3061 7210
info@esaote.fr

BRASIL

Esaote Healthcare do Brasil
Rua Tomas Carvalhal, 711
04006-001 São Paulo SP
Tel. +55 11 2789 0400 Fax +55 11 2789 0432
comercial@esaote.com.br

GERMANY

Esaote Europe B.V. – Niederlassung Deutschland
Max-Planck-Straße 27a
50858 Köln
Tel. +49 2234 688 5632, Fax +49 2234 967 9628
info@esaote.de, www.esaote.de

ARGENTINA

Esaote Latinoamérica S.A.
San Martín 551, Cuerpo 'C', Piso 8, (C1004AAK) Buenos Aires
Tel. +54 11 4326 1832, Fax: +54 11 4328 1245
info@esaote.com.ar

SPAIN

Esaote España S.A.
C/. Pont Reixat, 5
08960 Sant Just Desvern, Barcelona
Tel. +34 93 473 2090, Fax +34 93 473 2042
info@esaote.es

INDIA

Esaote Asia Pacific Diagnostic Private Limited
DLF IT Park, A - 44 & 45, Tower- C, Ground Floor,
Sector- 62, Noida, Uttar Pradesh, India
Pin Code: 201 301
Tel. +91 120 4732444, Fax +91 120 4750148
info@esaote.in

THE NETHERLANDS AND BELGIUM

Esaote Benelux B.V.
Philippusweg 1
6227 AJ Maastricht
Tel. +31 43 3824650, Fax +31 43 3824651
benelux@esaote.nl

HONG KONG AND FAR EAST

Esaote China Ltd
18/F, 135 Bonham Strand Trade Centre,
135 Bonham Strand, Sheung Wan, Hong Kong
Tel. +852 2545 8386, Fax +852 2543 3068
esaote@esaotechina.com

UK

Esaote UK
14, Cambridge Science Park
Milton Road, Cambridge, CB4 0FQ
Tel. + 44 1223 424499, Fax + 44 709 288 0231
infoUK@esaote.com

CHINA

Esaote Shenzhen Medical Equipment
Room 2608, Tower B
Beijing Global Trade Center
36 North Third Ring Road East,
Dongcheng District, 100013, Beijing
Tel. +86 010 58257766, Fax +86 010 52257760

NORTH AMERICA

Esaote North America
8000 Castleway Drive,
Indianapolis, IN 46250
Tel. +1 317 813 6000, Fax +1 317 813 6600
inquire@esaoteusa.com

RUSSIAN FEDERATION AND CIS

Esaote S.p.A.
18 Leningradsky prospekt
Off. 5 and 6, Moscow 125040
Tel. +7 495 232 0205, Fax +7 495 232 1833
esaotemoscow@yandex.ru



Technology and features are system/configuration dependent.
Specifications subject to change without notice. Information might refer to products or modalities not yet approved in all countries.
For further details, please contact your Esaote sales representative.